

*Power in compact bodies*

# **ORANGE Series**

*Durable & advanced technology for  
**portable X-ray units***

*(High Frequency Inverter Generators)*



ORANGE 8016HF



ORANGE 9020HF



ORANGE 1025HF



ORANGE 1040HF



ORANGE 1060HF



X-ray with Design & Technology





**Power in compact bodies**

# **ORANGE Series**

**Durable & advanced technology for portable X-ray units** (High Frequency Inverter Generators)



## **ORANGE 8016HF**

**Better choice for your Equine examinations!  
(Hold it in your one hand only)**

- Power with quality (80 kV/16mA output)
- Wider range of kV (40 - 80 kV) in 1 kV steps
- Easy access to DR systems
- Flashing idea to Collimator Slot - easy and smooth enough
- Durable design with reliable radiation output

## **ORANGE 9020HF**

**Higher Output for Equine & Small animal**

- Bigger Output (90kV/20mA)
- Solid body with light weight
- Ergonomic Design
- One-hand Collimator Control
- Easy access to DR systems



## **ORANGE 1025HF**

**Upgraded power by innovative concept**

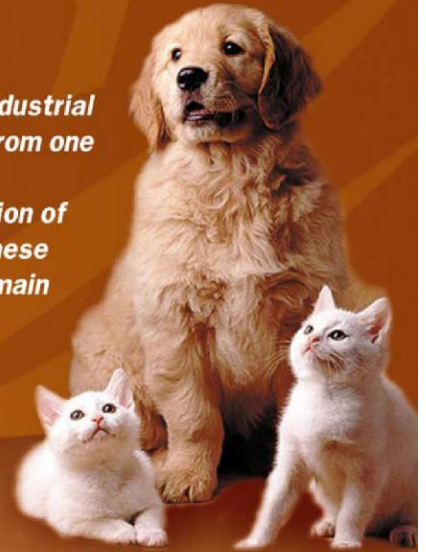
- Power in a tiny body (100kV/25mA)
- Strong 100kV output
- Compact & light weight with higher mA range up to 25mA
- Wide range of application : From equine lower limb to small animal surgery
- Reliable performance from Robust body



Orange portable X-ray units are applicable to medical, veterinary and industrial purpose and it is light, compact and powerful to be handled or carried from one place to another.

Ecoray's high frequency inverter technology is heading to the destination of more premium, more durable and more comfortable imaging solution. These units and applications are helpful to not only first-aid examination but main imaging solutions in your X-ray room.

Orange series with Robust design is the best selection for whom they look for the units with durability and performance.



## ORANGE 1040HF

**The best seller in the line.  
Most popular range that covers all..!!!**

- Outstanding & Stable imaging capability
- Durable housing and design
- Compact size but powerful output (100 kV/ 40mA)
- Ergonomic & Soft OP panel layout
- Right selection for small animal and equine stifles radiography



## ORANGE 1060HF

**Premium value with superior output**

- Extraordinary X-ray output. 60mA Strength
- Small enough + Strong enough
- Powerful output (100 kV/60 mA max.)  
from compact size - Similar with 1040HF
- Suitable for your small animal examinations
- Convenient handling for advanced image quality

## PORTABLE DR

- Compact and light weight design
  - 8x10 inch imaging area
- Application range extension
- 129 micro pixel size, high precision
- 3.1 Mega pixel resolution

PC



Control box



Detector



Portable X-ray



## Specifications

Model	8016HF	9020HF	1025HF	1040HF	1060HF
Type of generator	Monobloc design (high frequency inverter generator, full bridge discrete IGBT)				
Power requirement (max.)	1.2 kVA	1.35 kVA	1.6 kVA	2.4 kVA	3.2 kVA
Adjustable kV (1kV steps)	40 - 80 kV	40 - 90 kV	40 - 100 kV	40 - 100 kV	40 - 100 kV
mAs range	0.32 - 30 mAs (22 steps)	0.32 - 30 mAs (21 steps)	0.32 - 50 mAs (22 steps)	0.32 - 100 mAs (26 steps)	0.32 - 100 mAs (26 steps)
Maximum programmed mA output by kV level	10, 15, 16 mA	12, 15, 16, 18, 20 mA	15, 20, 25 mA	20, 26, 30, 35, 40 mA	25, 30, 35, 40, 50, 60 mA
Focal spot of tube	1.0 x 1.0 mm	1.2 X 1.2 mm	1.2 x 1.2 mm	1.2 x 1.2 mm	2.0 x 2.0 mm
Exposure time	0.02 - 2.5 sec				
Total filtration	2.5 mm Al (including collimator)				
Collimator light field	27 x 27 cm @ 66cm SID		35 x 35 cm @ 66 cm SID / 40 x 40 cm @ 75 cm SID		
Collimator lamp	Duration of 30 sec (controlled by both of hand switch and OP panel) Higher than 100lx (12/50W) light intensity				
OP & LED display	7 segment operation display for kV, mAs setting Ready, X-ray, Wait and Error (low voltage or overload) Buttons of Collimator lamp ON/OFF, Laser pointer ON/OFF, APR storage key and Display reverse.				
APR memory	8 memory standard and extendable to 16 combinations				
SID measurement	Dual laser pointer & tape measuring				
Protection	Overload protection of high frequency inverter and X-ray tube				
Line voltage (required)	110 ~ 130 VAC 50/60 Hz single phase 20A or 200 ~ 260 VAC 50/60 Hz single phase 16A				200~260 VAC 50/60 Hz single phase 16A
Weight (without accessories)	6.4 kg	7.0 kg	9.9 kg	12.5 kg	13.5 kg
Size (L x W x H) mm	280 x 140 x 150	275 x 140 x 150	344 X 178 X 175	344 x 191 x 188	344 x 191 x 210
Accessories	Hand carry box (Aluminum case) with a shoulder strap, AC PWR cable (6m long), Extra fuses and a halogen lamp, a Hand switch and a user manual				

Specifications are subjects to change without prior notice.

## Unique Features in Oranges



EcoRay Co.,LTD.

**Илан Медицинска Апаратура ООД**  
 гр. Варна, ул. Кирил Шиваров 9 Б  
 тел. **0700 17373**  
 факс 052 612258  
 e-mail: office@ilan.bg  
[www.ilan.bg](http://www.ilan.bg)